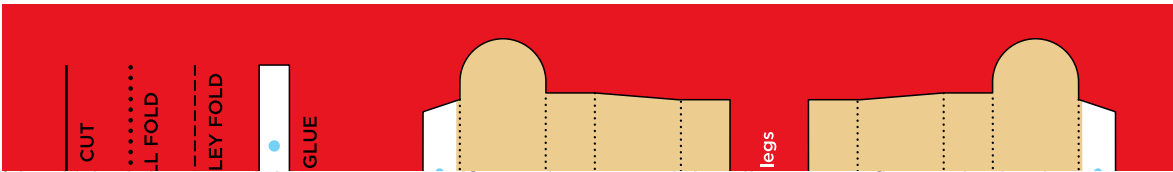




Print on 8½-by-11-inch heavyweight matte paper. If you plan to send the clip art as a flat card, trim the paper to fit into a 7-by-10-inch envelope. Follow the folding and assembly instructions as shown on the clip art. Use a quick-drying white tacky glue, such as Aleene's.

(DON'T WORRY! THIS TEXT WON'T APPEAR ON YOUR PDF PRINTOUT.)



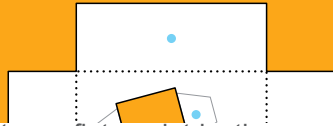


Print on 8½-by-11-inch heavyweight matte paper. If you plan to send the clip art as a flat card, trim the paper to fit into a 7-by-10-inch envelope. Follow the folding and assembly instructions as shown on the clip art. Use a quick-drying white tacky glue, such as Aleene's.

(DON'T WORRY! THIS TEXT WON'T APPEAR ON YOUR PDF PRINTOUT.)

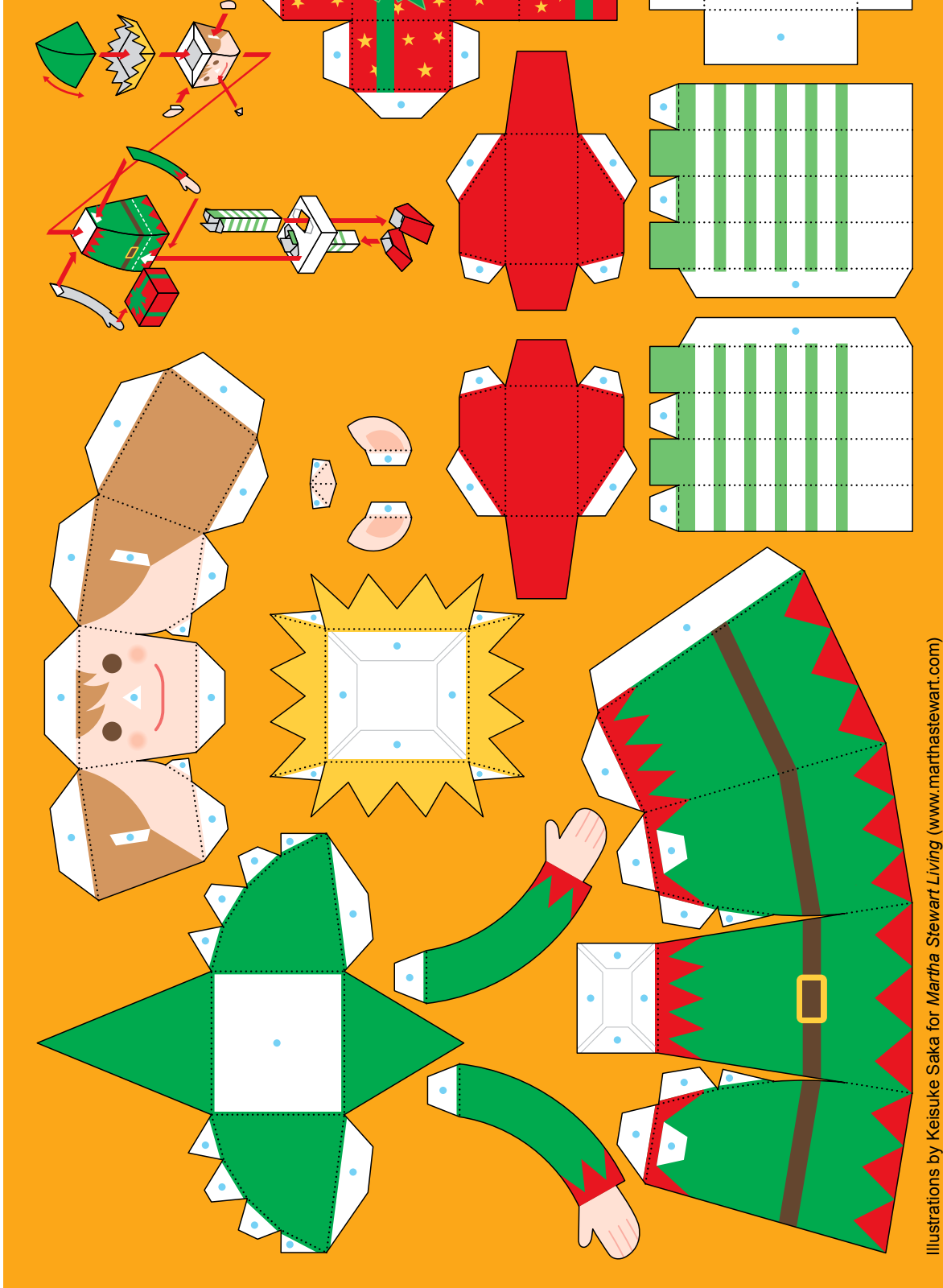


CUT
.....
L FOLD
- - - -
LEY FOLD
GLUE

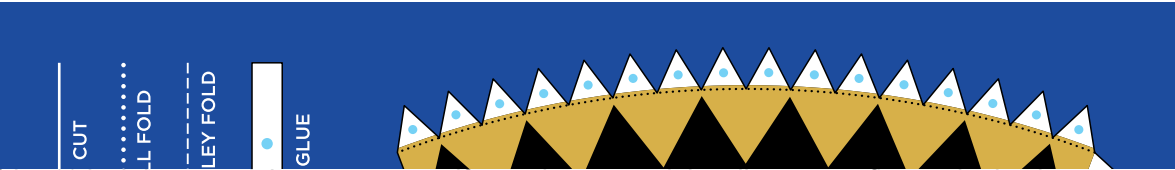


Print on 8½-by-11-inch heavyweight matte paper. If you plan to the send clip art as a flat card, trim the paper to fit into a 7-by-10-inch envelope. Follow the folding and assembly instructions as shown on the clip art. Use a quick-drying white tacky glue, such as Aleene's.

(DON'T WORRY! THIS TEXT WON'T APPEAR ON YOUR PDF PRINTOUT.)

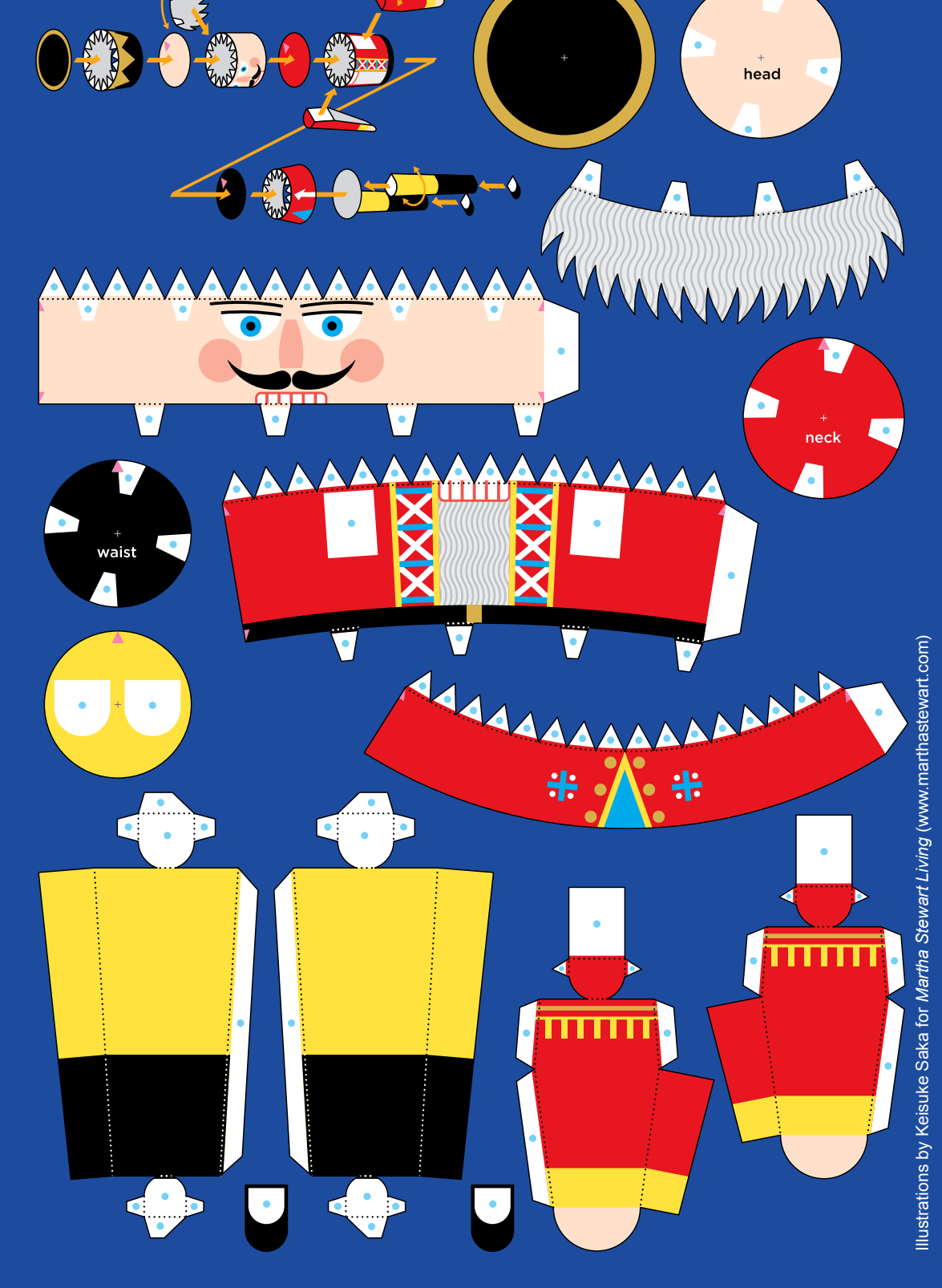


Illustrations by Keisuke Saka for Martha Stewart Living (www.marthastewart.com)



Print on 8½-by-11-inch heavyweight matte paper. If you plan to send the clip art as a flat card, trim the paper to fit into a 7-by-10-inch envelope. Follow the folding and assembly instructions as shown on the clip art. Use a quick-drying white tacky glue, such as Aleene's.

(DON'T WORRY! THIS TEXT WON'T APPEAR ON YOUR PDF PRINTOUT.)



Illustrations by Keisuke Saka for *Martha Stewart Living* (www.marthastewart.com)



Print on 8½-by-11-inch heavyweight matte paper. If you plan to send the clip art as a flat card, trim the paper to fit into a 7-by-10-inch envelope. Follow the folding and assembly instructions as shown on the clip art. Use a quick-drying white tacky glue, such as Aleene's.

(DON'T WORRY! THIS TEXT WON'T APPEAR ON YOUR PDF PRINTOUT.)

