

Valentine's Day Date Planner



marthastewart.com

©2006 MARTHA STEWART LIVING OMNIMEDIA

CONTENTS

2 MENU

Plan a romantic dinner for two with this irresistible menu.

3 RECIPES

Print these easy-to-read cards, and file them in your recipe box.

Herb-Scented Flatbread

Smashed Peas with Fresh Mint

Mushroom and Celery-Heart Salad with Lemon Vinaigrette

Polenta Lasagne

Chocolate Soufflé

Champagne Punch

9 OPENING CHAMPAGNE

Try our tips for popping open a bottle of bubbly.

10 ROMANTIC MOVIES

Treat your date to one of these timeless tales of romance.

11 FLOWER ARRANGEMENT

Create a beautiful centerpiece that's remarkably simple.

12 CLIP-ART CRAFT: VALENTINES GIFT BAGS

These pretty bags are easy to print and assemble, and they can hold a host of treats for your sweetheart.

HOLIDAY MENU

Menu

Herb-Scented Flatbread

•

Smashed Peas with Fresh Mint

•

*Mushroom and Celery-Heart Salad
with Lemon Vinaigrette*

•

Polenta Lasagne

•

Chocolate Soufflé

•

Champagne Punch

RECIPES

POLENTA LASAGNA—INGREDIENTS

SERVES 2

An individual lasagna makes a special meal for two. They take some time to prepare, completely assemble them in advance. Instant polenta is also called Italian cornmeal; it is available in many supermarkets and specialty stores.

FOR THE SAUCE:

- 1/4 ounce dried porcini mushrooms
- 1 1/2 teaspoons olive oil
- 1 1/2 teaspoons unsalted butter
- 1 small carrot, peeled and finely chopped
- 1 small celery stalk, strings removed and finely chopped
- 1/2 small red onion, peeled and finely chopped
- 1 small garlic clove, peeled and finely chopped
- 3 ounces ground sirloin
- 3 ounces ground veal

- 3 ounces ground pork
- Coarse salt and freshly ground pepper
- 1/2 cup dry red wine
- 1/2 cup chopped tomatoes (boxed or canned)
- 2 cups homemade chicken stock, or low-sodium canned chicken broth, skimmed of fat
- 1/4 teaspoon freshly grated nutmeg

FOR THE POLENTA:

- Olive oil, for pan
- 1 teaspoon salt
- 2/3 cup plus 1 tablespoon instant polenta

FOR THE BÉCHAMEL SAUCE:

- 2 tablespoons unsalted butter, plus more for surface
- 2 tablespoons all-purpose flour
- 1 cup plus 3 tablespoons milk, plus more for thinning if needed
- 1/4 teaspoon salt
- 1/4 teaspoon freshly grated nutmeg

OTHER INGREDIENTS:

- 10 ounces fresh spinach, washed
- Coarse salt and freshly ground pepper
- 1/2 cup plus 2 tablespoons freshly grated Parmesan cheese
- 1/2 teaspoon butter

FOLD

SERVING BUBBLY



Show your Champagne savvy by using professional opening techniques. Carefully remove the wire cage from the top of the bottle by holding your thumb on the cork as you untwist the wire. Tilt the bottle forty-five degrees, make a fist around the cork, and turn the bottom as you apply pressure to the cork. Pour slowly, cradling the neck with one hand and holding the dimpled base with the thumb of your other hand for maximum control.

Romantic Movies

These films, made over a period of about sixty years, tell stories whose settings span more than a century—which only goes to prove that romance really is a timeless theme.

The Way We Were

1973
DIRECTED BY
SYDNEY POLLACK

Robert Redford and Barbra Streisand are an unlikely couple held together by love but pushed apart by just about everything else.

Sabrina

1954
DIRECTED BY
BILLY WILDER

Audrey Hepburn and Humphrey Bogart star in this most charming fairy tale.

Out of Africa

1985
DIRECTED BY
SYDNEY POLLACK

Meryl Streep portrays Karen 'Isak' Dinesen Blixen—an independent woman whose life is complete but for one small detail: a dashing big-game hunter, played by Robert Redford.

Moonstruck

1987
DIRECTED BY
NORMAN JEWISON

Cher won an Oscar for her performance as an Italian widow engaged to marry a man she doesn't love—until she meets his black-sheep brother (Nicolas Cage).

A Room With a View

1986
DIRECTED BY
JAMES IVORY

This Merchant-Ivory classic, based on the E.M. Forster novel, portrays young love set against the oppressive backdrop of upper-class British society and the heartbreaking beauty of Tuscany. Starring Daniel Day-Lewis and Helena Bonham-Carter.

Say Anything

1989
DIRECTED BY
CAMERON CROWE

John Cusack doesn't know what he'll do with his life after high school, but he does know he loves Ione Skye; and he'll do just about anything to prove it in this teen romance.

West Side Story

1961
DIRECTED BY
ROBERT WISE

With a plot by Shakespeare (it's based on *Romeo and Juliet*) and a score by Leonard Bernstein and Stephen Sondheim, this exquisitely choreographed tale of star-crossed lovers is one of our favorites.

The Princess Bride

1987
DIRECTED BY
ROB REINER

Love conquers all—evil, death, Wallace Shawn—in this fractured fairy tale from the director of *This Is Spinal Tap*. Featuring, in size order, Billy Crystal, Robin Wright, Mandy Patinkin, Cary Elwes, and the late Andre the Giant.

Gone With the Wind

1939
DIRECTED BY
VICTOR FLEMING

No list of romantic movies would be complete without this epic tearjerker, starring Vivien Leigh as a southern belle who survives two husbands and the Civil War before coming to terms with her true love, played by Clark Gable.

FLOWER ARRANGEMENT



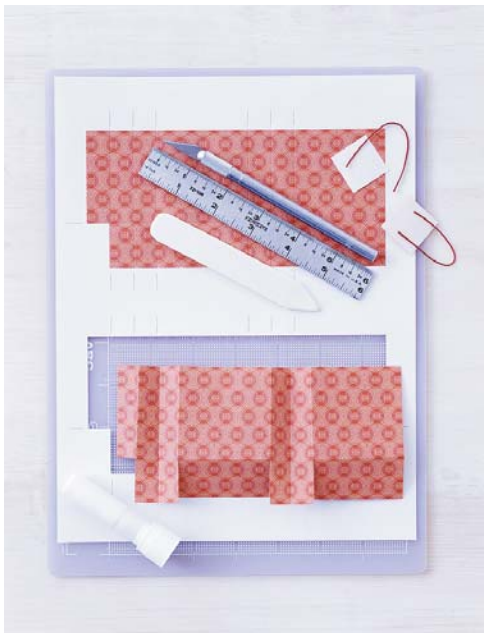
Heart Centerpiece

On February 14, only one flower will do. It's not that a big bouquet of assorted flowers isn't sublime, but a single genus best conveys a message of love: the rose, preferably in lush tones of red and pink. Although long stems crowd every florist's cooler, any romantic knows that beautiful blossoms are the heart of the matter—especially when their stems are cut short and they're gathered into tiny vases or glasses arranged in the unmistakable shape of affection.

CLIP-ART CRAFT: VALENTINE GIFT BAGS

Brown paper bags, beware: The prettiest valentine presents will arrive in sacks with patterns as delectable as the treats tucked inside. Waxed-twine handles further distinguish these dainty totes from their workaday cousins.

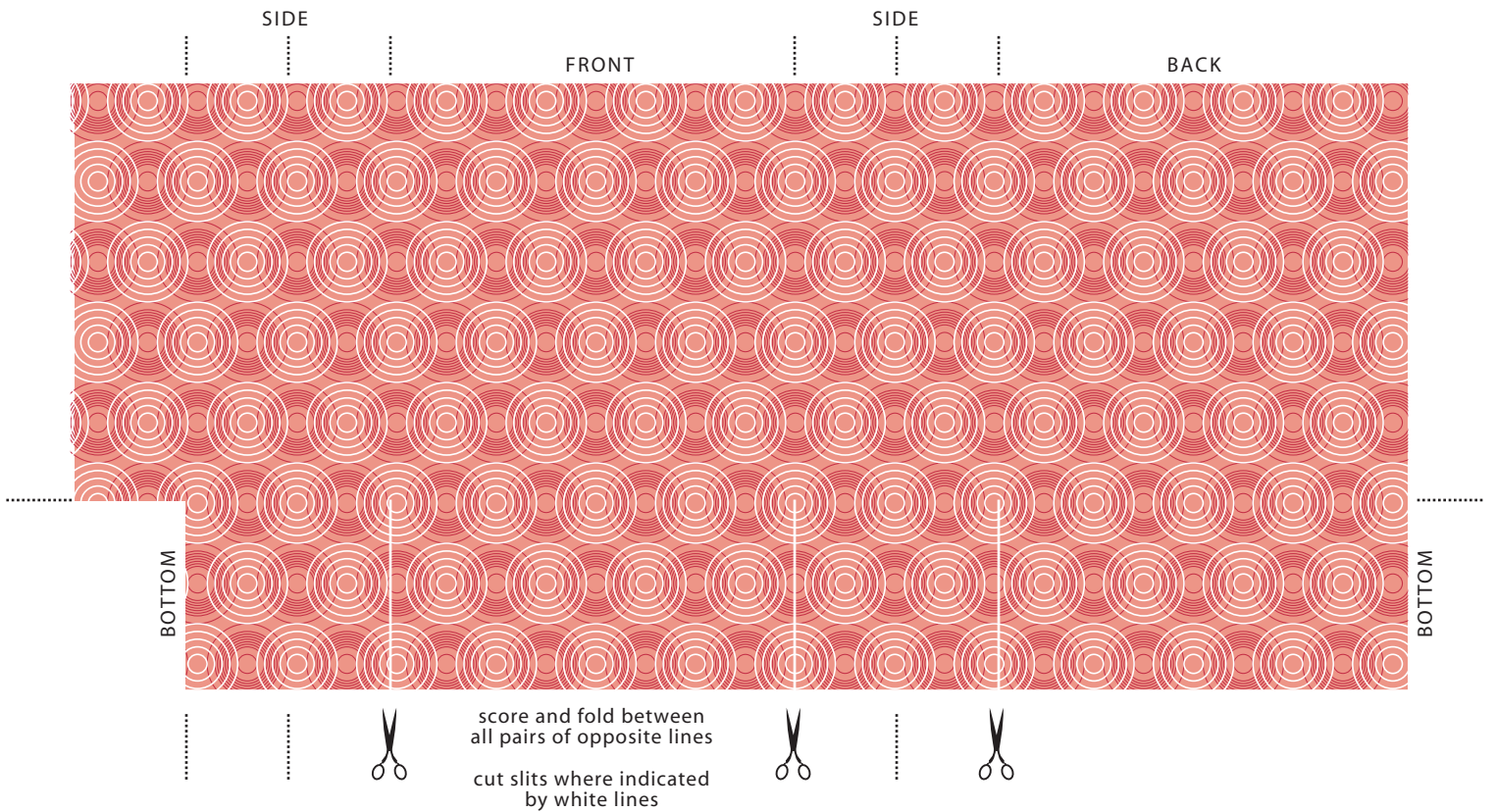
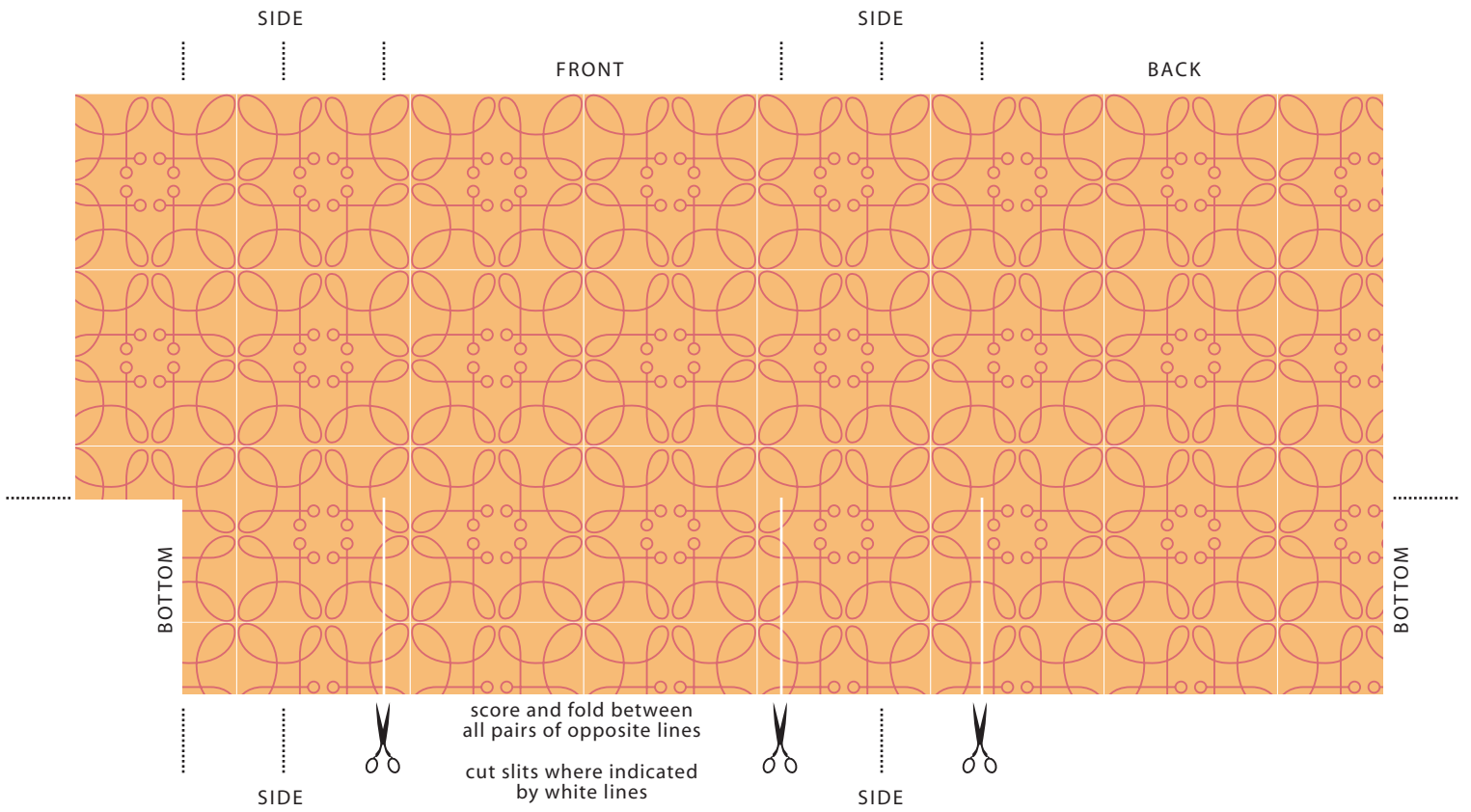
And assembling this project requires only a bit of folding and a few dabs of glue. Add colorful tissue paper and a handful of candy, and a happy Valentine's Day is in the bag.



1. Print template, enlarging it to desired size. Score at dotted guidelines with a bone folder and a ruler. Cut three slits (indicated by white lines) to horizontal scoring. Cut out around perimeter, pinking top edge if desired. Crease along scored marks, as pictured.

2. Cut two lengths of waxed twine (for a 2 1/4-inch-tall bag, we used 4-inch loops). With a glue stick, affix ends of each to a small square of medium-weight paper; glue squares inside front and back panels of bag. Tuck the tab inside, and glue; tuck small bottom flaps under the larger ones, and glue.

CLIP-ART CRAFT: VALENTINE GIFT BAGS



CLIP-ART CRAFT: VALENTINE GIFT BAGS

