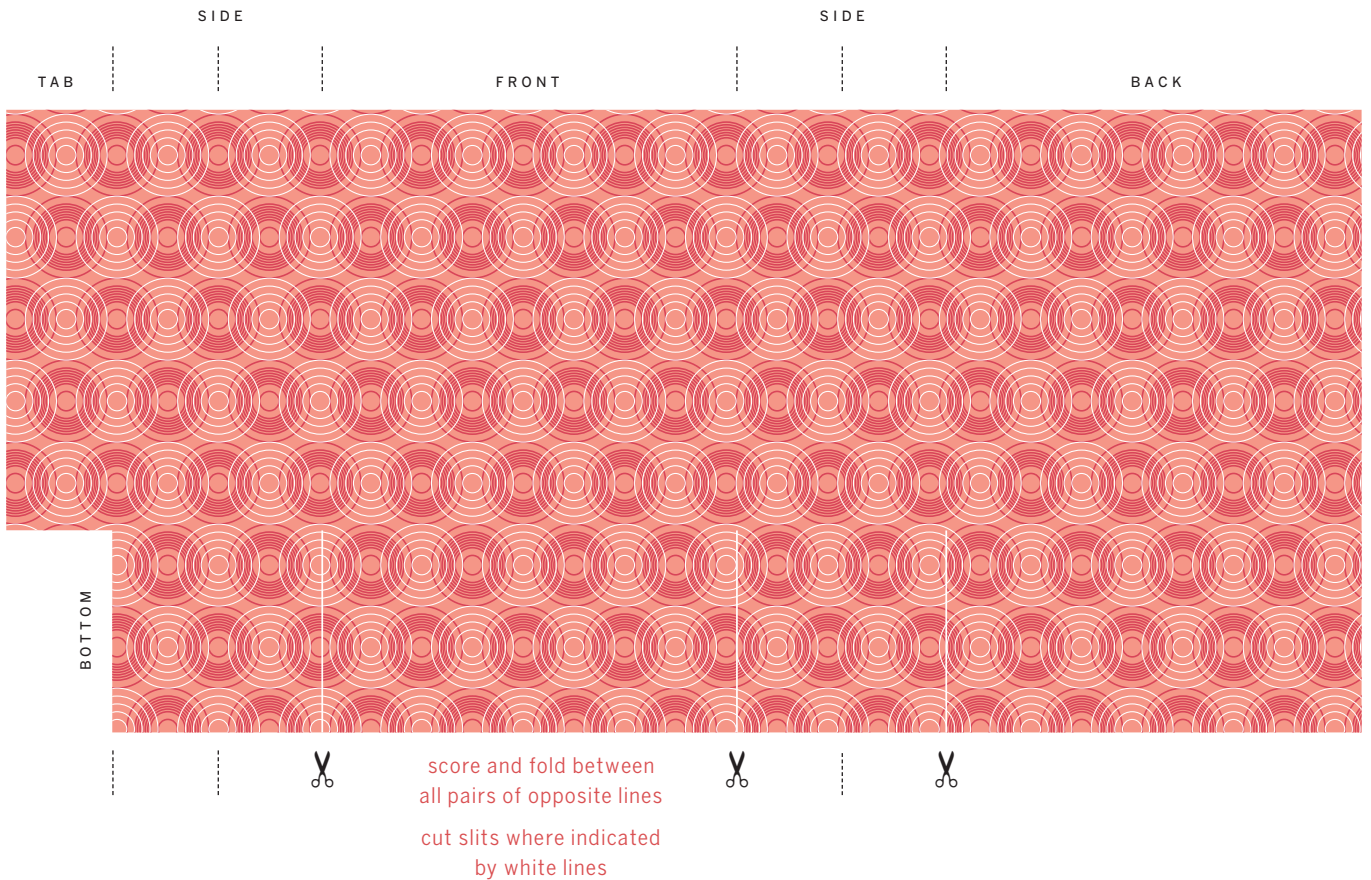
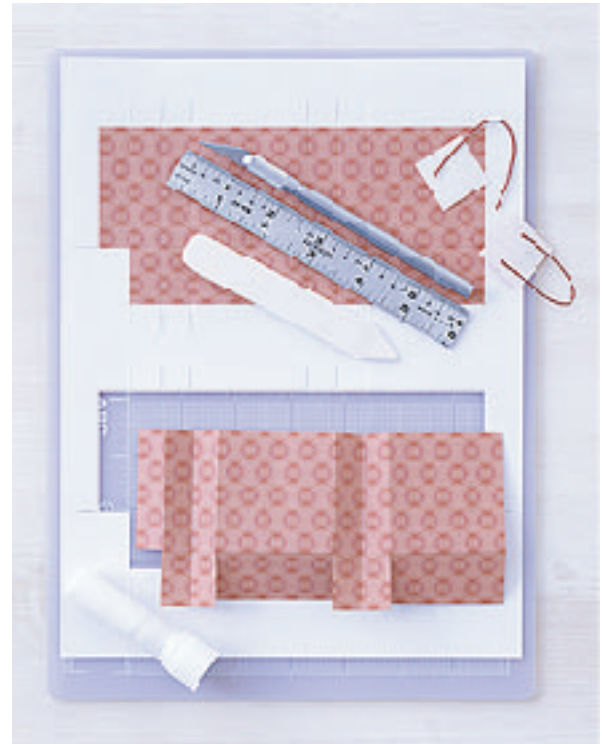
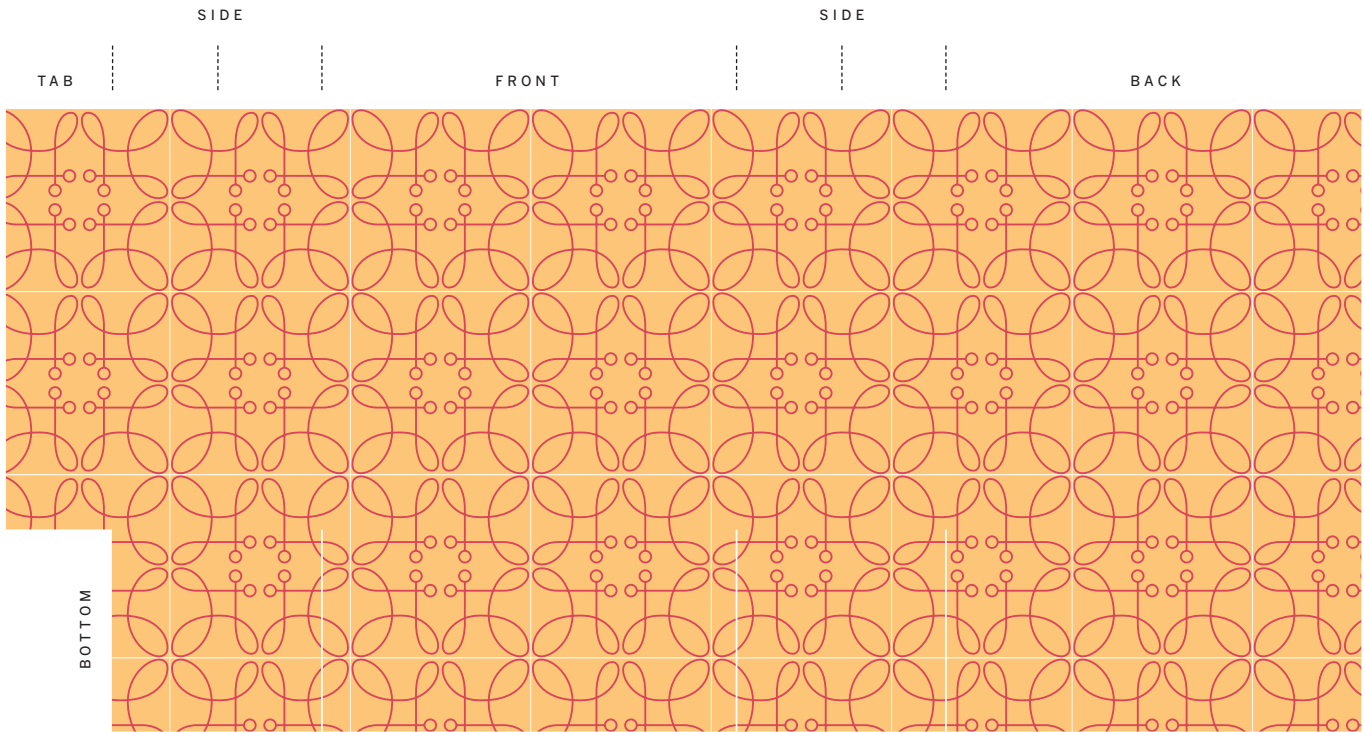


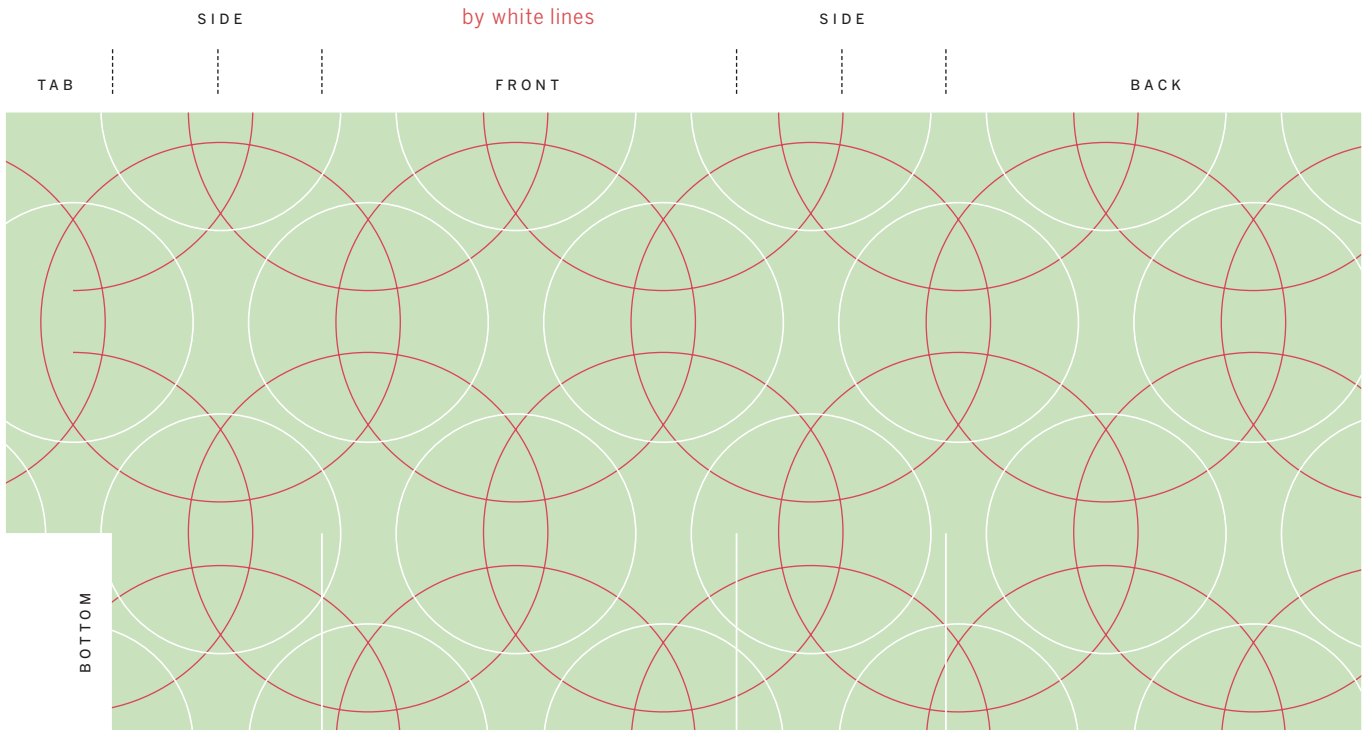
TEMPLATE

Print the templates on a color printer, enlarging to desired size. Score at dotted guidelines with a bone folder and a ruler. Cut three slits (indicated by white guidelines) to horizontal scoring. Cut out around perimeter, pinking top edge, if desired. Crease along scored marks. Cut two lengths of waxed twine (for a 2 1/4-inch-tall bag, we used 4-inch loops). With a glue stick, affix ends of each to a small square of medium-weight paper; glue squares inside front and back panels of bag. Tuck tab inside, and glue; tuck small bottom flaps under larger ones, and glue.





score and fold between
all pairs of opposite lines
cut slits where indicated
by white lines



score and fold between
all pairs of opposite lines
cut slits where indicated
by white lines